

APLLICATION

Excess Flow Valves are spring loaded check valves. When properly sized and installed, they are designed to close and shut off the flow of fluid from the source in case of breakage or rupture of components downstream of the valve. The valves operate by closing when the flow of fluid through the valve generates enough force to overcome the tension of the spring holding it open

To operate properly, Excess Flow Valves must be correctly sized and installed. The size and closing flow rating must be selected for the specific application. Installation must be in the correct direction. Downstream flows should be unrestricted.

The Excess Flow Valve does not provide complete shut off. There is a small orifice at the check mechanism to allow a slight bleed. The valve will remain closed until repairs are made, then the orifice permits for pressure equalization, and the valve will reopen automatically.



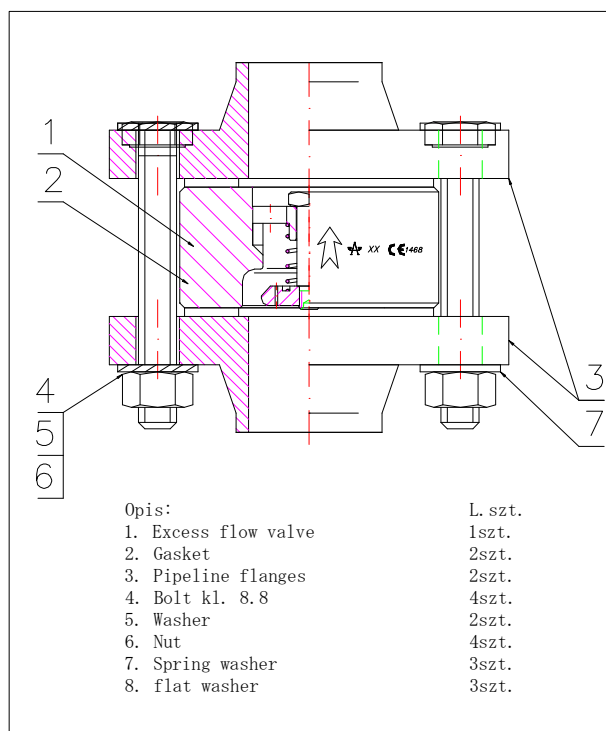
MATERIAL SPECIFICATION

Standard:

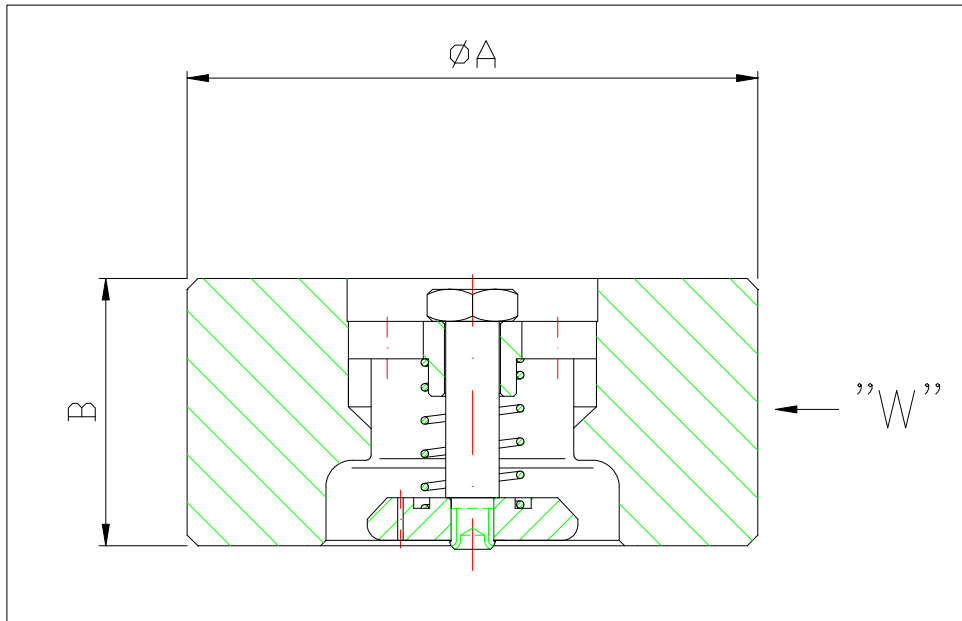
- body, disc, nut - S355J2
- spring - X5CrNi18

Option

- body, disc, nut, spring - X5CrNi18



Dimensions



Type		Flow range [LPM liquid]		Dimensions [mm]	
Symbol	Pipeline dimensions	Propane	Ammonia	A	B
ZNWA20	3/4"(DN20)	20-80	17-68	60	40
ZNWA25	1"(DN25)	50-150	43-128	70	40
ZNWA32	1 1/4"(DN32)	50-210	43-179	80	40
ZNWA40	1 1/2"(DN40)	80-230	68-196	90	50
ZNWA50	2"(DN50)	130-520	110-442	107	50
ZNWA65	2 1/2"(DN65)	180-680	153-578	127	50
ZNWA80	3"(DN80)	220-850	187-723	142	60
ZNWA100	4"(DN100)	260-1500	221-1275	168	60