

## Pump unit Z4500

### APPLICATION

Pump unit with 4" Corken sliding-vane pump, type Z 4500 was designed for filling big transportation tanks (LPG semi-trailers) or a few smaller tanks at the same time. Thanks to modern design and high quality of materials the time of trouble-free service is considerably extended and exceeds the same parameters of competitive products. This type of pump unit is very efficient and pump speed can be increased without the risk of pump damage provided that inflow conditions are sufficient.



### Catalogue numbers

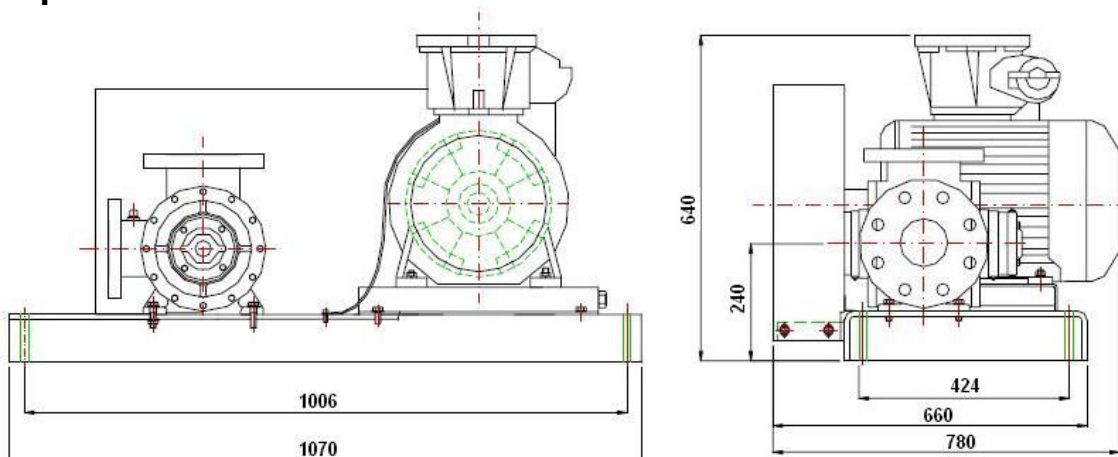
**Pump Z4500:** 16.032

**Pump unit Z4500:** 15.027

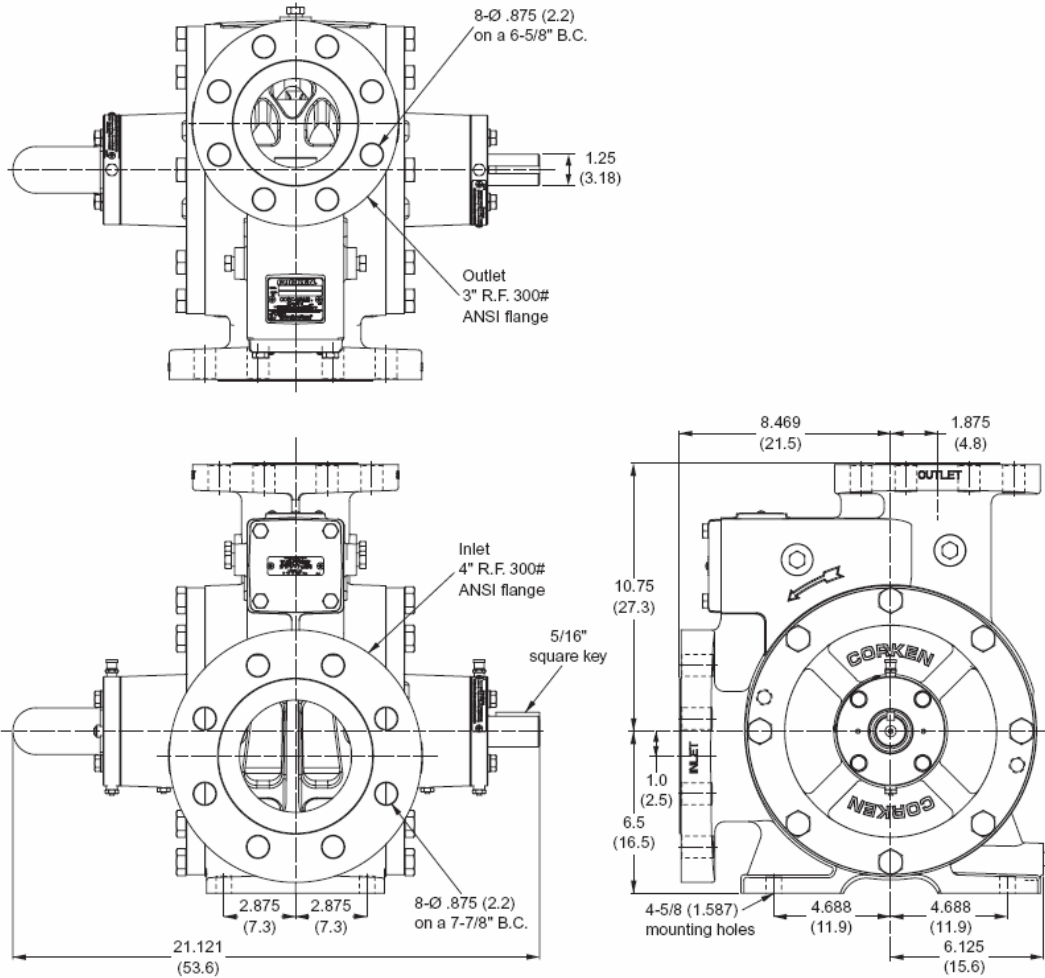
### SPECIFICATION

Pump speed:	420 – 800 RPM
Working temperature range:	-32 °C to 107 °C
Max. working pressure:	28,6 bar
Max. differential pressure:	8,6 bar
Max. driver:	22 kW
Flow:	746 to 1446 l/min

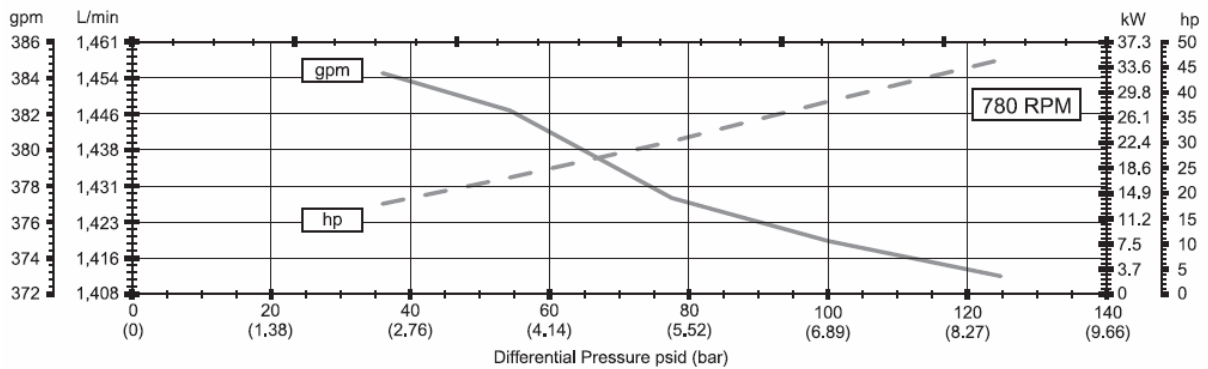
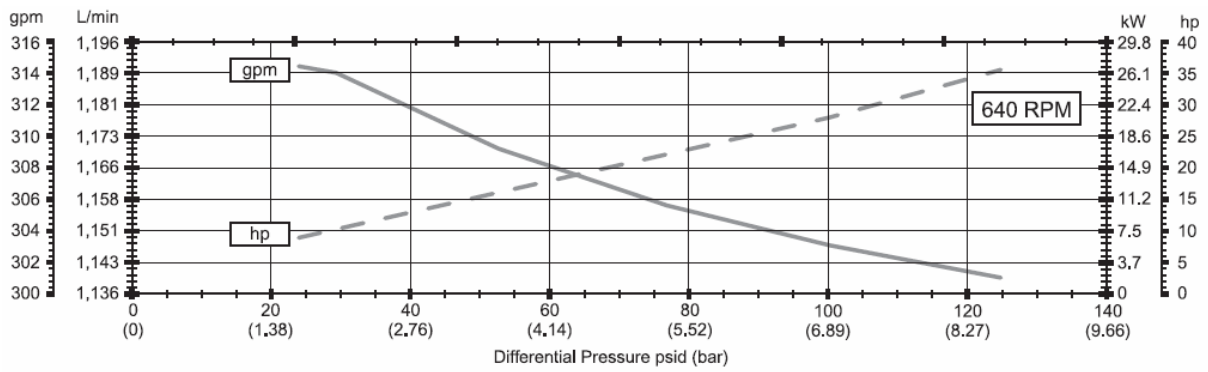
### Pump unit Z4500 Size:



**Dimensions**

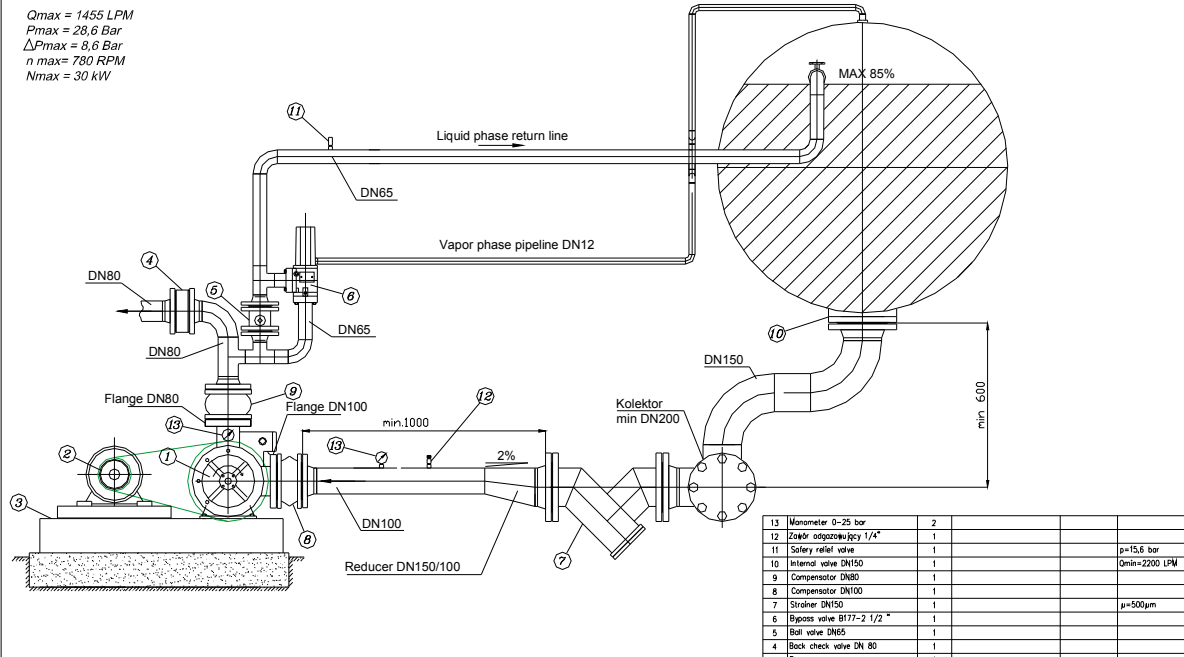


**Pump Z4500 characteristic:**



# AUREX – Pump unit Z4500

$Q_{max} = 1455 \text{ LPM}$   
 $P_{max} = 28.6 \text{ Bar}$   
 $\Delta P_{max} = 8.6 \text{ Bar}$   
 $n_{max} = 780 \text{ RPM}$   
 $N_{max} = 30 \text{ kW}$



**Recommendation:**

- Inlet pipeline should be bend to pump direction.
- Straight inlet pipeline  $L=1000\text{mm}$  is obligatory.
- The bottom of the tank must be no less than 600 mm above the pump inlet nozzle.
- Vapour phase from bypass valve B177 connect to tank vapour phase.  
If this is impossible connect to liquid return line.
- Compensator pos. 8 i 9 are recommended (compensator with ANSI flanges)
- Pump unit baseplate should be filled with grout.

13	Manometer 0-25 bar	2			
12	Zakręt odpowietrzający 1/4"	1			
11	Safety relief valve	1			$p=15.6 \text{ bar}$
10	Intermitent valve DN150	1			$Q_{min}=2200 \text{ LPM}$
9	Compensator DN80	1			
8	Compensator DN100	1			
7	Strainer DN150	1			$\mu=500\mu\text{m}$
6	Bypass valve B177-2 1/2"	1			
5	Ball valve DN65	1			
4	Back check valve DN 80	1			
3	Frame	1			
2	Electric drive IQGEE=well13	1			
1	Pump Z4500	1			

Poz.	Nazwa	Licz.	Oznaczenie/norma	Materiał	Uwagi

**AUREX LPG**  
 Sp. z o.o.  
 05-090 Raszyn

**Z4500 installation scheme**  
 Wzrostki - Dłg. No. **S100-01.00**

1/1

