

Stationary pump units

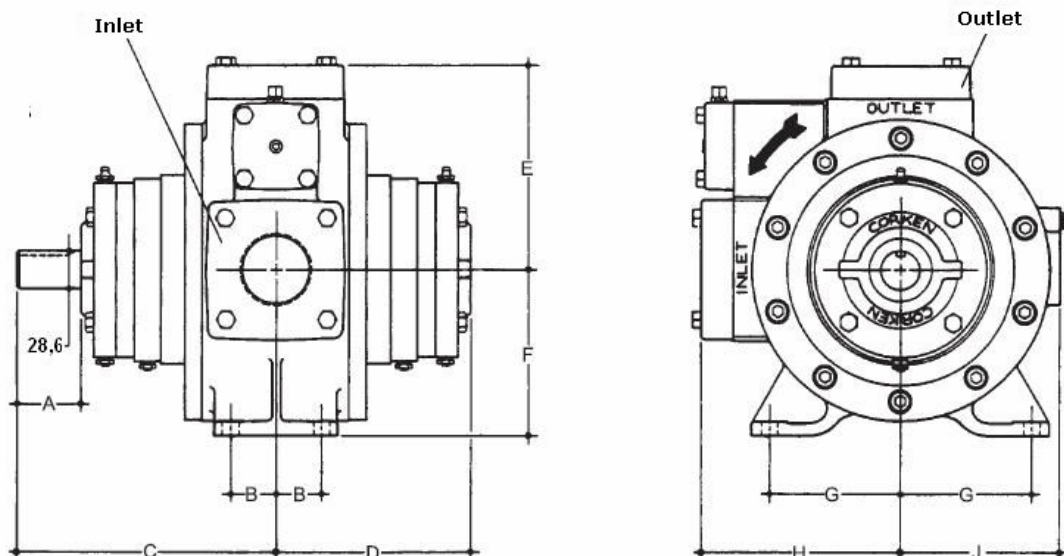
APPLICATION

Coro Vane pumps are positive displacement pumps. They are capable of producing differential pressure up to 8,6 bar. Pumps are available in 5 sizes with capacity from 0,2 to 79,5 m³/h. These pump units are commonly used at LPG terminals for loading or unloading stationary tanks and loading LPG semi-trailers / bobtails. Some models of Coro Vane pumps are equipped with internal relief valves.



SPECIFICATION	Model			
	521	1021	F1021	F1521
Inlet flange	2-1/2"	3"	3" 300 lb ASA	4" 300 lb ASA
Outlet flange	2"	3"	2-1/2" 300 lb ASA	3" 300 lb ASA
Min speed RPM	420	420	420	420
Max speed RPM	950	950	950	860
Min temperature	-25°F (-32°C)			
Max temperature	225°F (107°C)			
Max. working pressure	28.6 bar	28.6 bar	28.6 bar	28.6 bar
Max. differential pressure	8.6 bar	8.6 bar	8.6 bar	6.9 bar
Max power	10 hp 7.5 kW	20 hp 15 kW	20 hp 15 kW	30 hp 22 kW

Size 521/1021

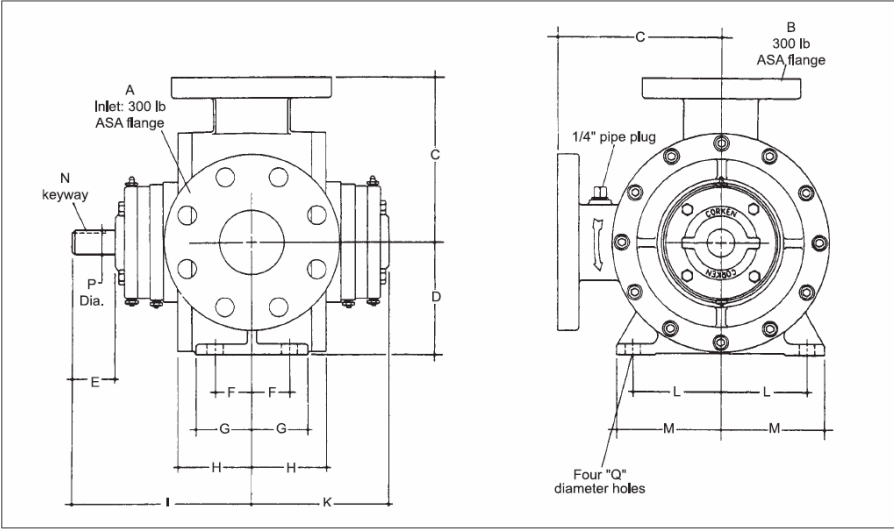


AUREX - STATIONARY PUMP UNITS

Model	Inlet	Outlet	A [mm]	B [mm]	C [mm]	D [mm]
521	2-1/2" NPT	2" NPT	50	34,9	200	150
1021	3" NPT	3" NPT	50,8	44,5	215,9	163,5

Model	E [mm]	F [mm]	G [mm]	H [mm]	J [mm]	K [mm]
521	155,6	127,0	101,6	155,6	119,1	12,7
1021	179,4	139,7	104,8	179,4	136,5	12,7

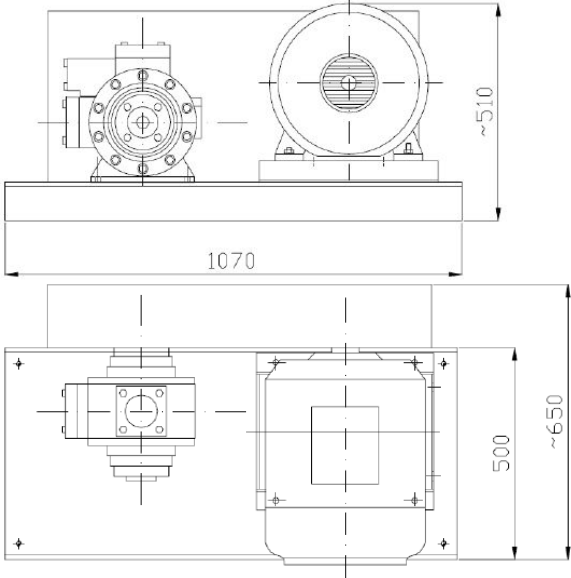
PUMPS F1021/F1521 SIZES



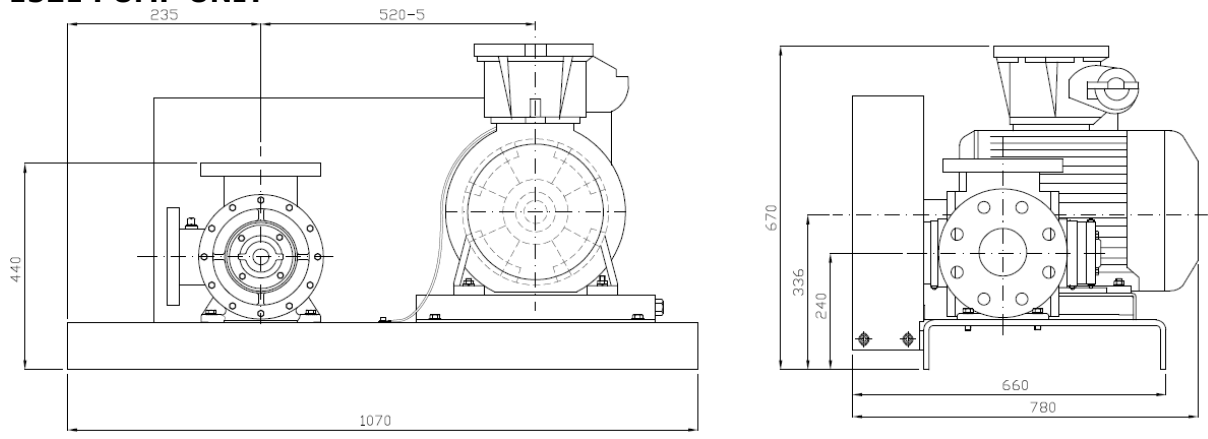
Model	A [in]	B [in]	C [mm]	D [mm]	E [mm]	F [mm]	G [mm]	H [mm]
F1021	3	2-1/2	197,0	140,0	51,0	44,0	67,0	89,0
F1521	4	3	199,0	140,0	76,0	73,0	95,0	117,0

Model	J [mm]	K [mm]	L [mm]	M [mm]	N [mm]	P [mm]	Q [mm]
F1021	216,0	165,0	105,0	125,0	6,4	29,0	12,7
F1521	270,0	205,0	105,0	125,0	6,4	29,0	12,7

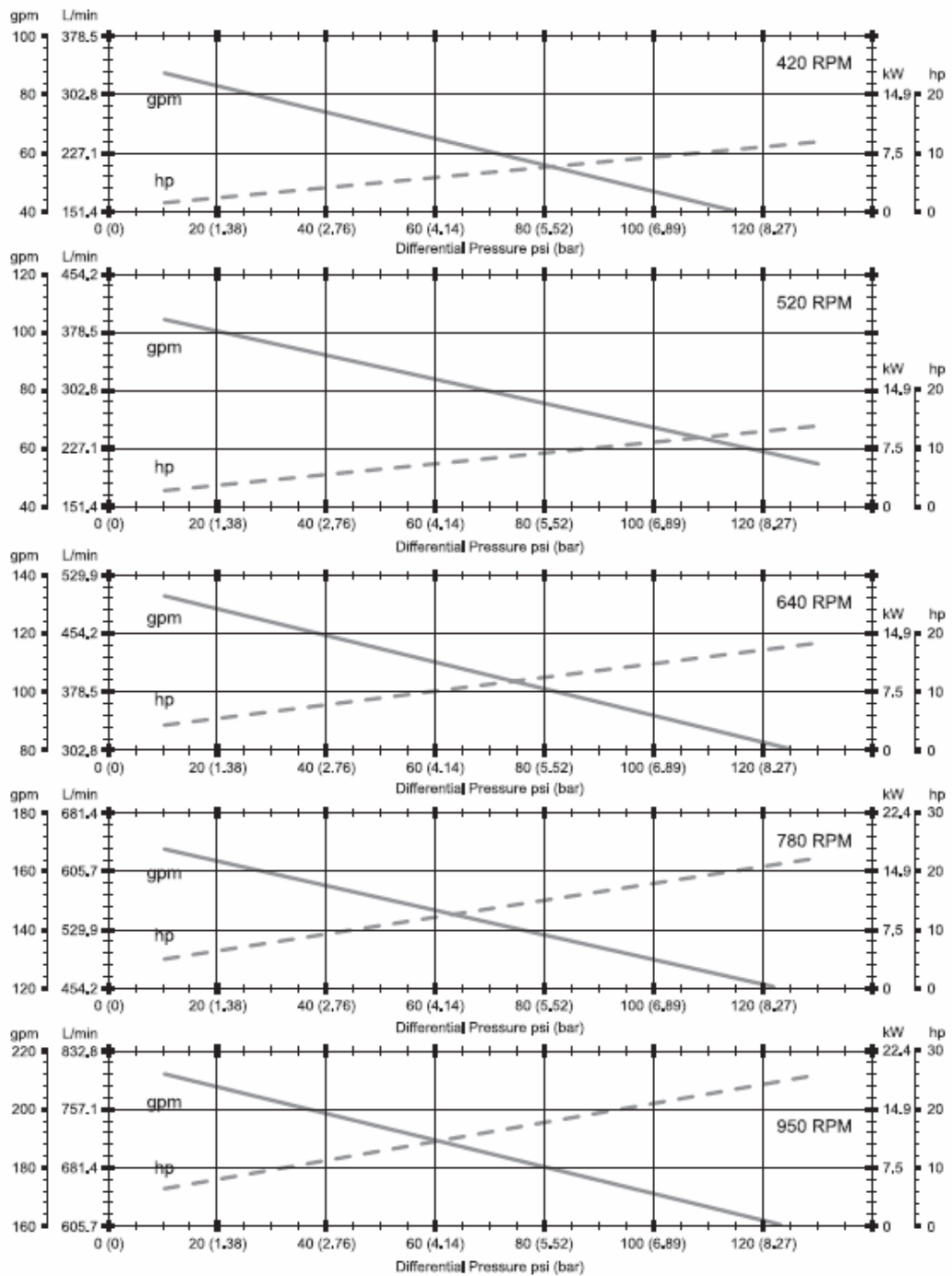
1021 PUMP UNIT



1521 PUMP UNIT



Characteristics of 1021



Characteristics 1521

