

Pumps for transportation tanks

APPLICATION

Sliding-vane Z-series pumps are new generation of equipment, designed for tanks and semi-trailers for LPG transportation. Technical solutions used in Z-series pumps assure durability and reliability of this equipment, regardless the adverse working conditions typical for truck pumps. Pumps are resistant to work with high differential pressures, high revolutions and high shaft axial load. Z-series pumps are available as units with hydraulic motors or electric motors, depending on requirements and application.

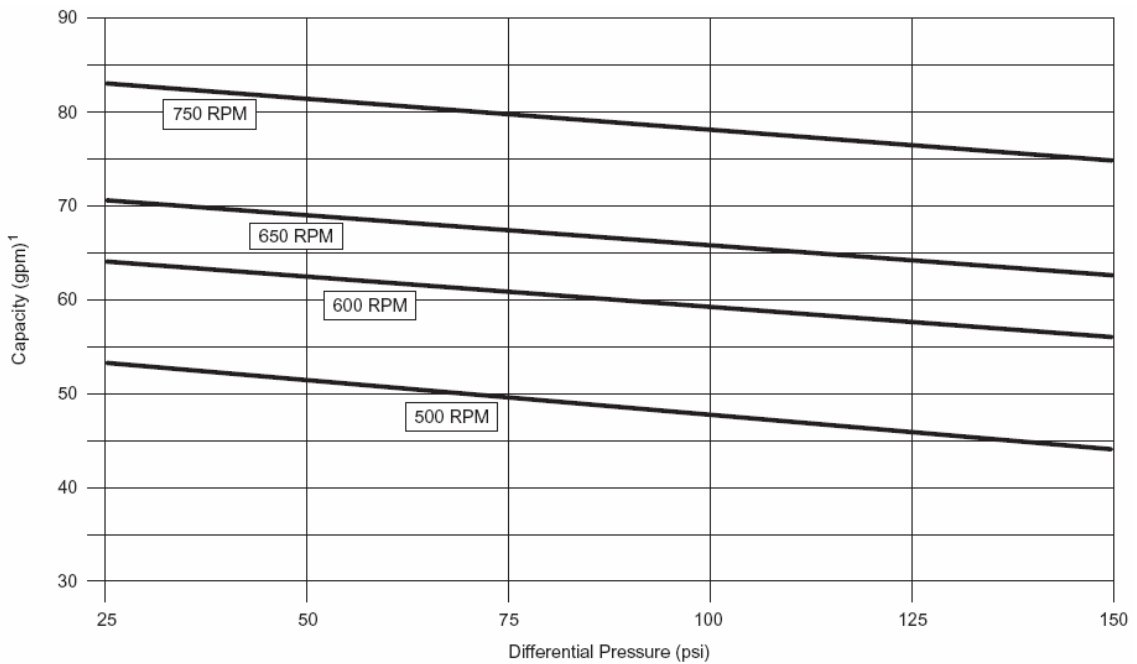
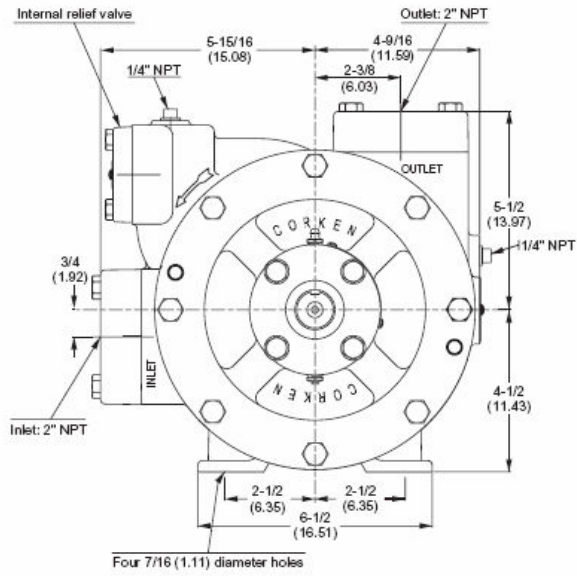
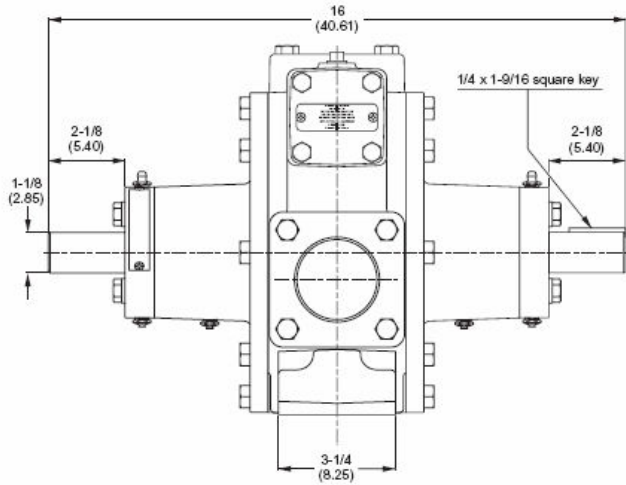


Model Z3200

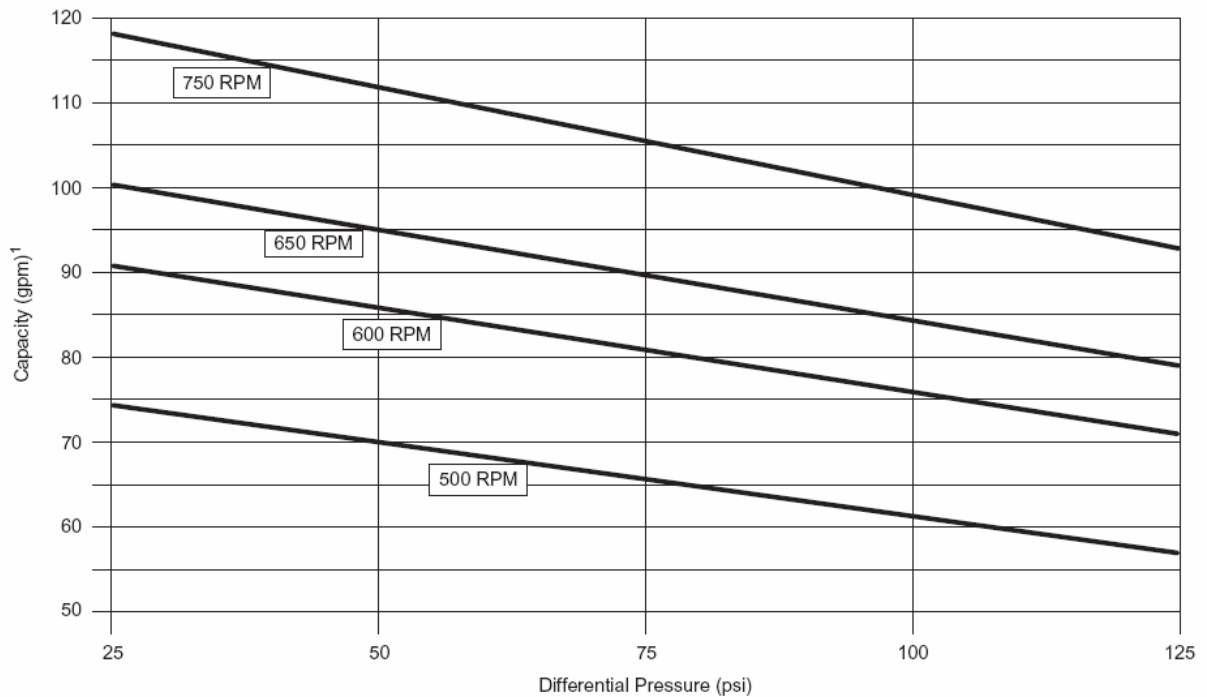
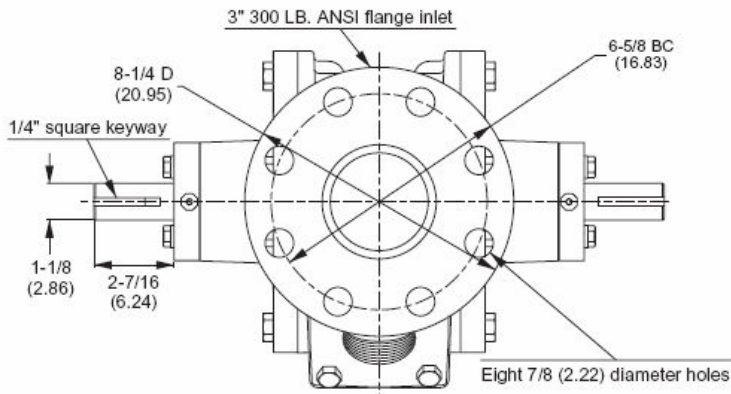
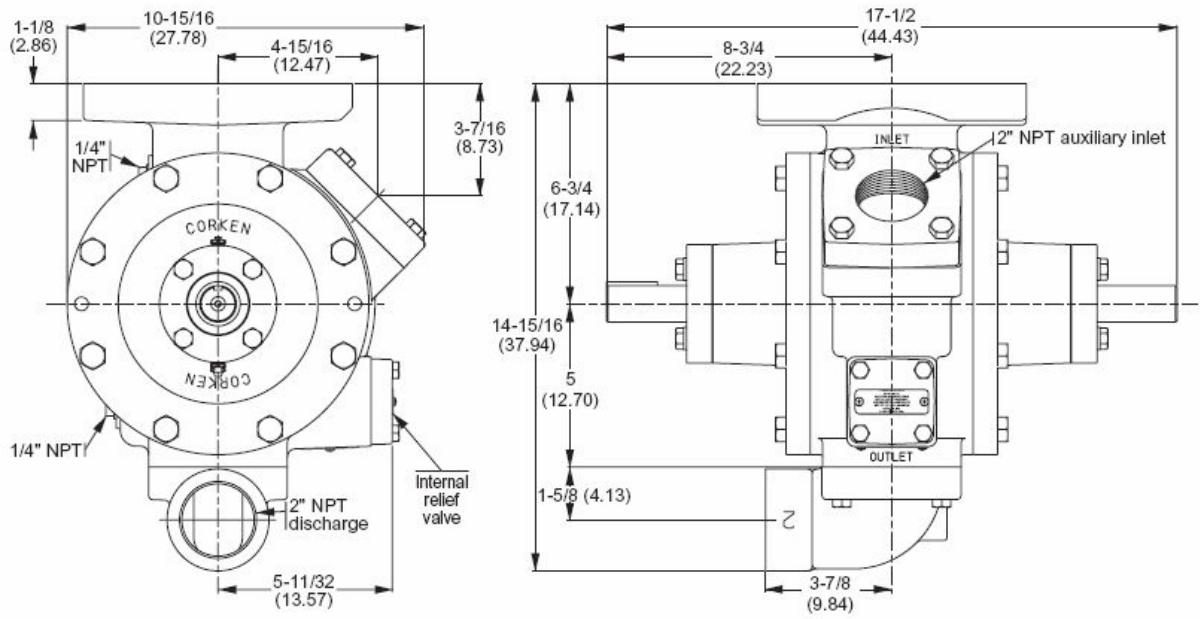
SPECIFICATION

Model	Z2000	Z3200	Z4200
Cat. No	16.026	16.030	16.031
Inlet	2" NPT	3" 300lbs ANSI	4" 300lbs ANSI
Outlet	2" NPT	2" NPT	2x 2" NPT
Maximum Speed	800 RPM		
Minimum working temperature	-32 °C		
Maximum working temperature	107 °C		
Maximum working pressure	28,6 bar		
Maximum differential pressure	8,6 bar		
Flange outlet	No	Yes	No
Inside bypass valve	Yes	Yes	Yes

Z2000



Z3000, Z3200



Z4200

