

Kosan Crisplant's evacuation systems are designed for easy and safe evacuation of LPG cylinders before repair as well as for evacuation of overfilled and leaky LPG cylinders.

- Solutions for any evacuation requirement
- All systems have thoroughly tested designs
- Complete modular systems
- Minimum cylinder handling
- Means to avoid accumulation of leaky and incorrectly filled cylinders
- Ex-proof design for installation directly in filling hall

Your benefits

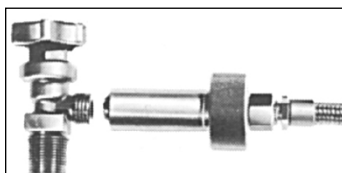
- Modular solutions with buffer tanks, pump, compressor and evacuation racks

- High safety level thanks to fast handling of leaky and incorrectly filled cylinders
- No bottlenecks - the total evacuation system including piping is designed by Kosan Crisplant
- Different evacuation heads mounted on the same evacuation rack

M-4 evacuation rack with ES-HP evacuation pump



Almost all Kosan Crisplant's filling heads can also be used as evacuation heads



The MS-U evacuation head is especially designed for evacuation of LPG cylinders with screw valves with external thread

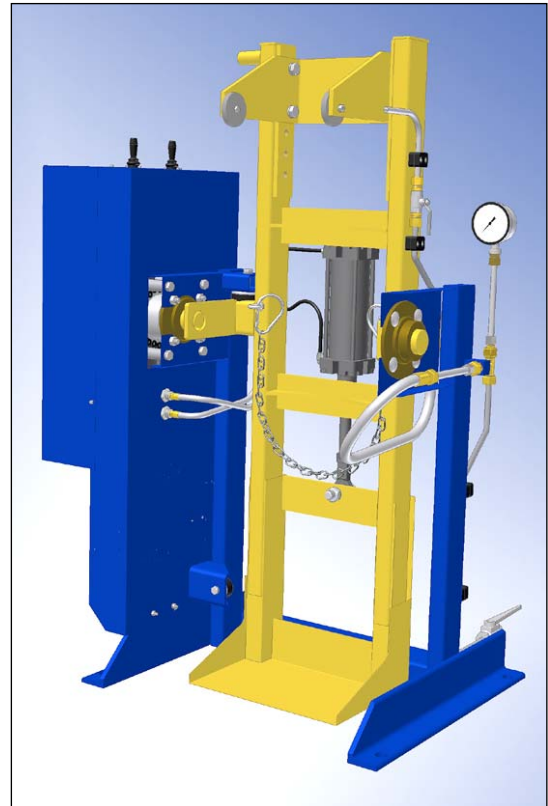
Your possibilities

- Manual or automatic operation
- Manual or automatic, tiltable stand-alone evacuation racks for industrial cylinders
- Stationary evacuation racks for 1 to 12 domestic cylinders
- Tilttable evacuation racks for 4 to 8 domestic cylinders
- In-line or stand-alone evacuation racks for domestic cylinders
- In-line systems are supplied with chain conveyor for control of cylinder flow
- Air-driven compressor for small capacities

- Compressor/pump solutions for high capacities
- Evacuation heads for centre valves and screw valves

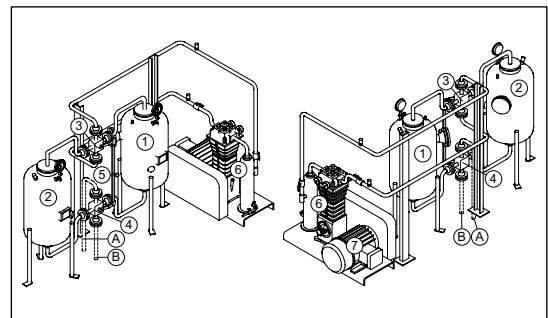
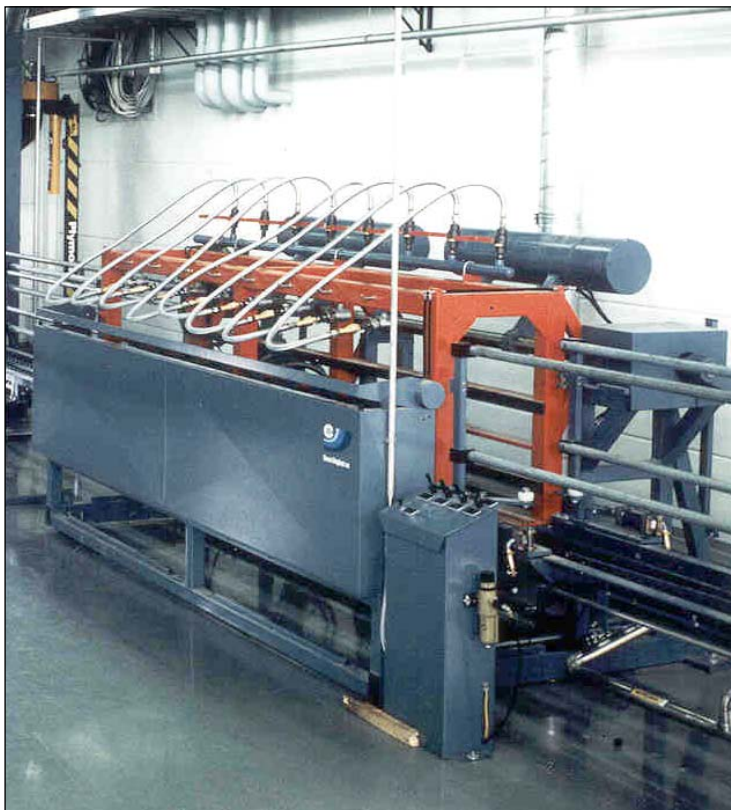
Your safety

- All evacuation systems are EU approved and designed in accordance with current EU directives, incl. the ATEX Directive (94/9/EC) and the Pressure Equipment Directive (97/23/EC)
- All evacuation systems are designed for use in hazardous areas classified as Zone 1 according to IEC 79-10 and Class I, Division 1 according to NEC (USA), article 500
- National/local approvals



The tiltable evacuation rack for industrial cylinders is designed for stationary installation. It can be equipped with manual pneumatic filling heads for screw valves and/or manual mechanical filling heads for centre valves.

In-line ERI evacuation system integrated in chain conveyor



The ES-M evacuation system is designed for stationary installation on floor

- | | |
|---------------------------------|--------------------|
| A Connection to evacuation rack | 5 Handle |
| B Connection to storage tank | 6 Gas compressor |
| 1-2 Tanks | 7 Electrical motor |
| 3-4 Four-way valves | |

