

Flanged internal valve

APPLICATION

They are mounted directly to appropriate flanges located in transportation or stationary tanks.

C 404 series valves are commonly used in transportation tanks and in storage containers. This model is compact and very reliable. A built-in excess flow valve reduces the chance of uncontrolled product discharge when flow exceeds the rated flow capacity (i.e. as a result of pipe damage). This type of valve is available in two sizes: 3" and 4". C404-32 series with 4" flange comes standard with all stainless steel construction for maximum protection against rust and corrosion. 3" and 4" flanged internal valves belong to most popular internal valves, used in transportation tanks. 3" valve is suitable for Corken Z3200 pump and 4" valve for Z4200 pump.



C 404

Type C 404

Max. working pressure: 27,5 bar

Working temperature: - 30⁰ to 65⁰

DIMENSIONS

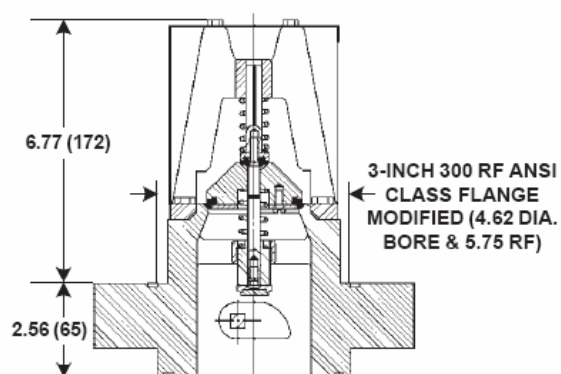
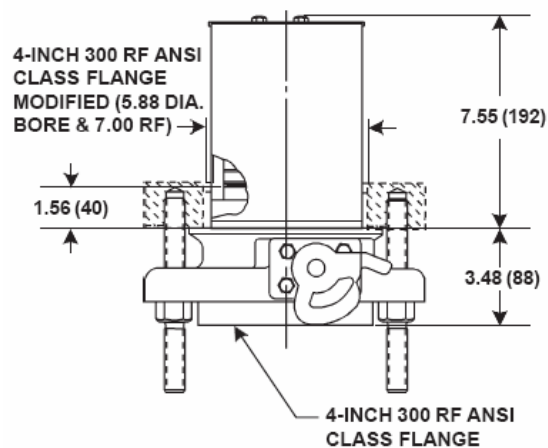


CHART 1 SPECIFICATION

Connections		Closing propane flow [l/min]	Propane gaseous phase flow [m ³ /hr]		Cat.Nr
Inlet	Outlet		1,7 bar	6,9 bar	
Type C 403, C 404	3", 300lb ANSI	568	689	1168	12.1120
	Modified	757	1010	1718	12.1121
	(diameter of opening for clamping screws 4-5/8")	946	1155	1964	12.1122
	3", 300lb ANSI	1514	1624	2760	12.1123
		1893	---	---	12.1124
Type C 404	4-inch, ANSI	1287	1651	2809	12.1150
	Modified	1514	1713	2910	12.1151
	(diameter of opening for clamping screws 5-5/8")	2271	2230	3792	12.1152
	4", 300lb ANSI	3028	6957	9546	12.1153
		3785	---	---	12.1154

Fisher flanged internal valves have built-in excess flow valve, that has fixed nominal closing flow (see chart). Excess flow valves close in emergency cases, i.e. when the installation is damaged. Special stud bolts, weakened with a groove on the outside diameter, are furnished with the valves to permit the pump or piping to shear off in the event of an accident, leaving the valve intact.

Fisher threaded internal valves are designed to be installed on transportation tanks, and they meet requirements of the international agreement ADR, that concerns transportation of dangerous goods. Fisher threaded internal valves, that are introduced to UE market by AUREX LPG are Π and CE-marked. They were subjected to conformity mark procedures according with UE directives PED(97/23/EC) and TPED(99/36/EC).